



HAWAI'I PACIFIC UNIVERSITY

CONCEPTUAL DESIGN PACKAGE
WATERFRONT PLAZA



30 November 2018



TABLE OF CONTENTS

PRECEDENT IMAGERY

- Classrooms3
- Library.....4
- Offices5

SUITE PLANS & KEYED FURNITURE PLANS

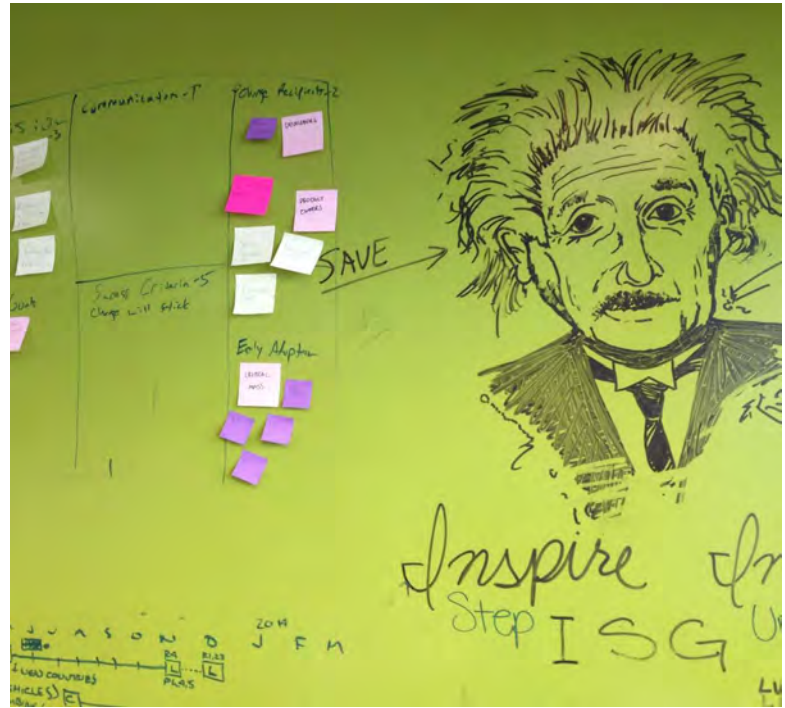
- Existing & Proposed Plans: Suite 1-3046
- Keyed Furniture Plan: Suite 1-3047
- Existing & Proposed Plans: Suite 1-5408
- Existing & Proposed Plans: Suite 4-2009
- Keyed Furniture Plan: Suite 4-200 10
- Existing & Proposed Plans: Suites 5-360 & 6-300 11
- Keyed Furniture Plan: Suite 5-360 12
- Keyed Furniture Plan: Suite 6-300 13
- Keyed Furniture Plan: Suite 6-300 14
- Existing & Proposed Plans: Suites 1-510 & 1-520 15

PROGRAM

- College Of Liberal Arts 16
- Library 17
- Engineering Department..... 18

SPACE ANALYSIS MATRIX 19

LIBRARY SEATING AND STACKS PROGRAM MATRIX 20

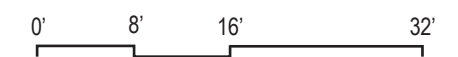
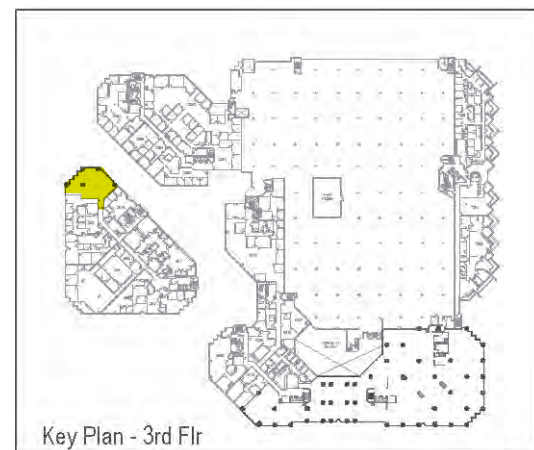
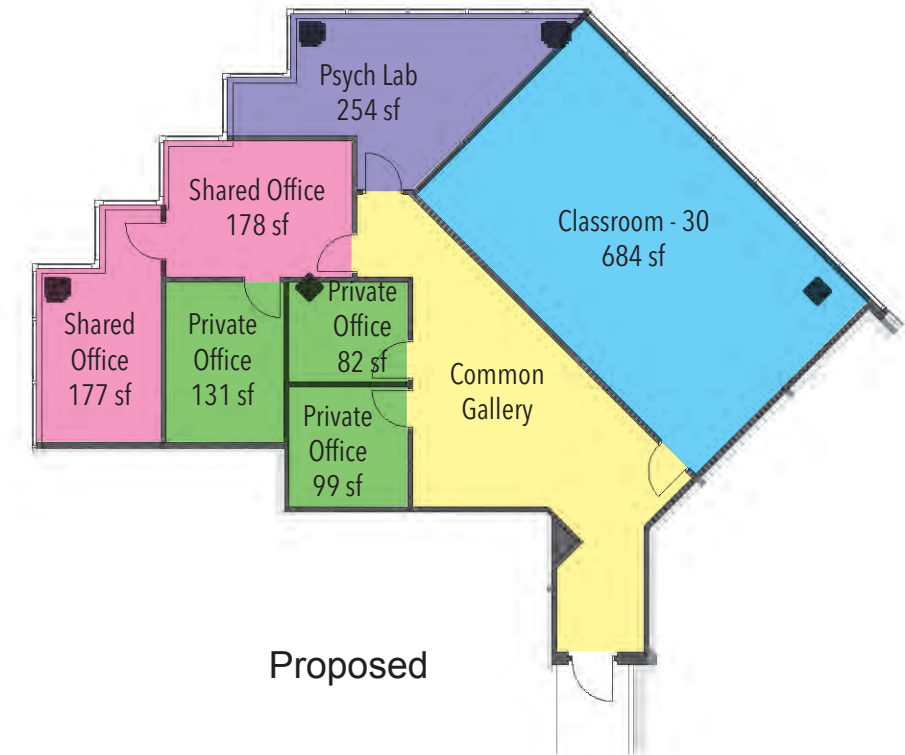
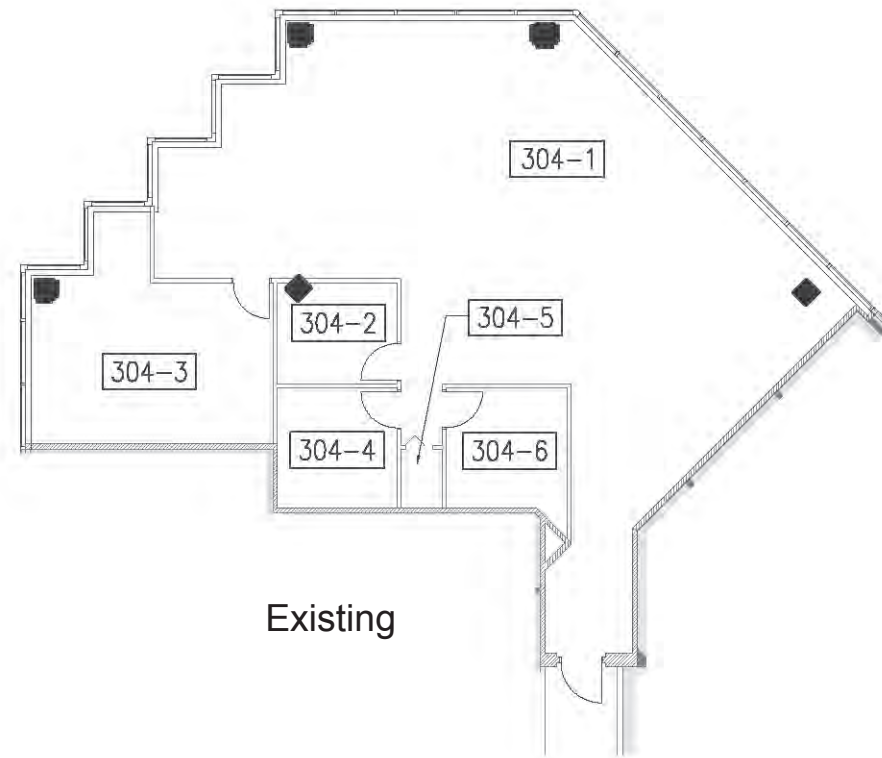






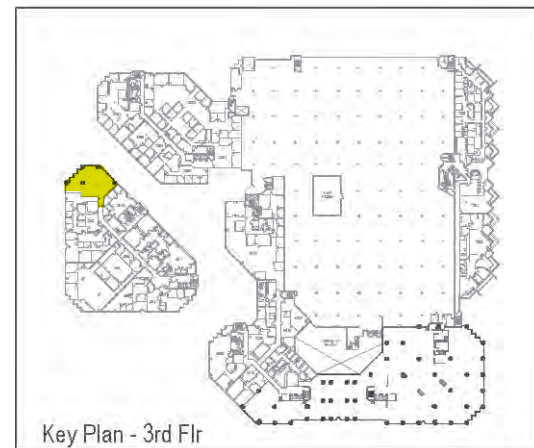
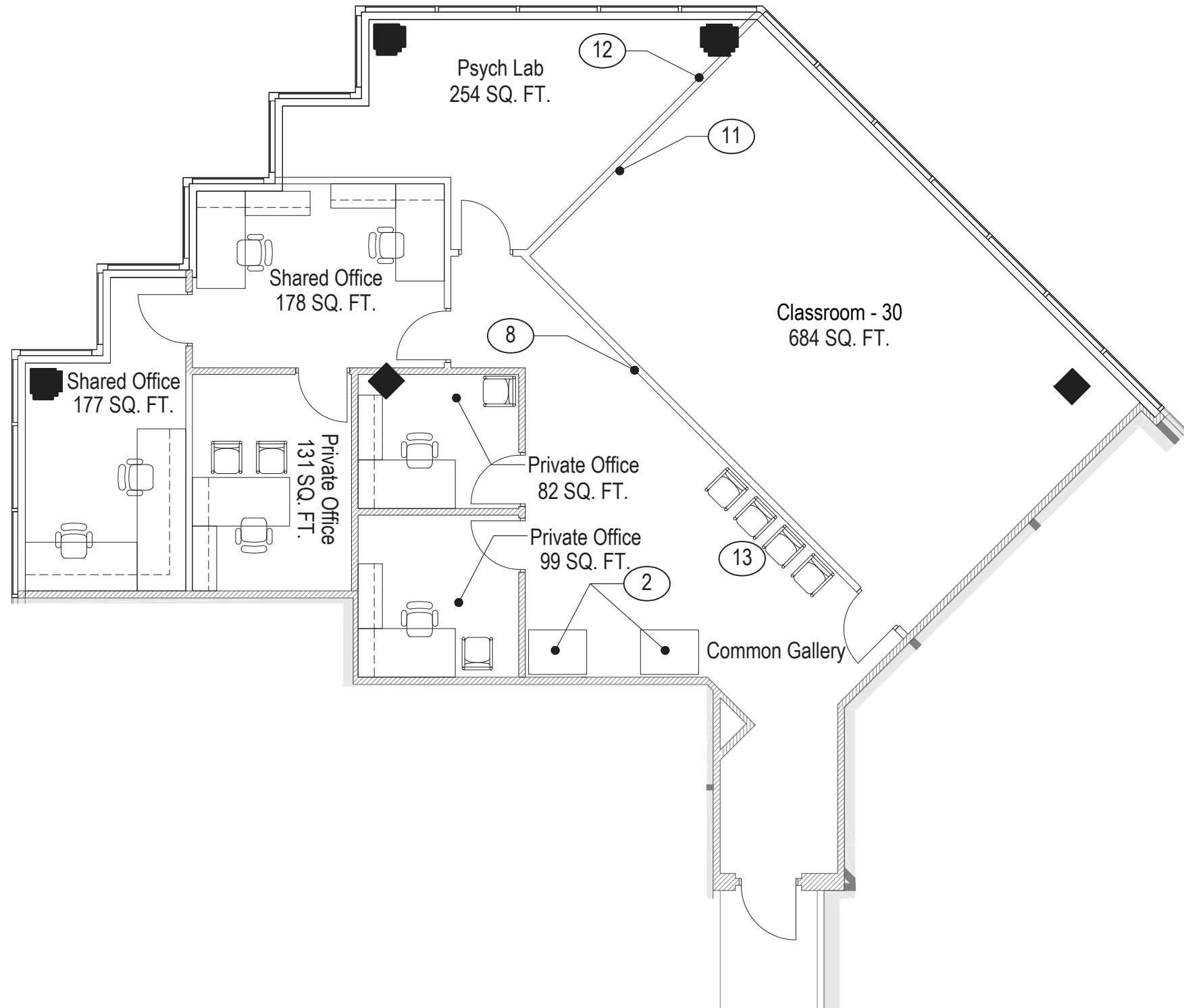
PROGRAM LEGEND

- Classrooms
- Misc. Program Space
- Private Offices
- Work Stations
- Shared Offices
- Support Space
- Library
- Corridors / Common Space
- Conference Room



FURNITURE PLAN KEY NOTES:

- | Key | Note |
|-----|-------------------------------------|
| 1 | Shelving |
| 2 | Multipurpose Printer |
| 3 | Reserved Books |
| 4 | Book Carts |
| 5 | Lockers |
| 6 | Large Format Printer |
| 7 | Faculty Mail Boxes |
| 8 | Art Display Area |
| 9 | New Plumbing Fixtures |
| 10 | Full Lite Glass Barn/Swinging Door |
| 11 | Instruction Wall |
| 12 | Walltalker Markerboard Wallcovering |
| 13 | Guest Seating |
| 14 | Existing Electrical Panels |
| 15 | New Interior Glass Enclosure |

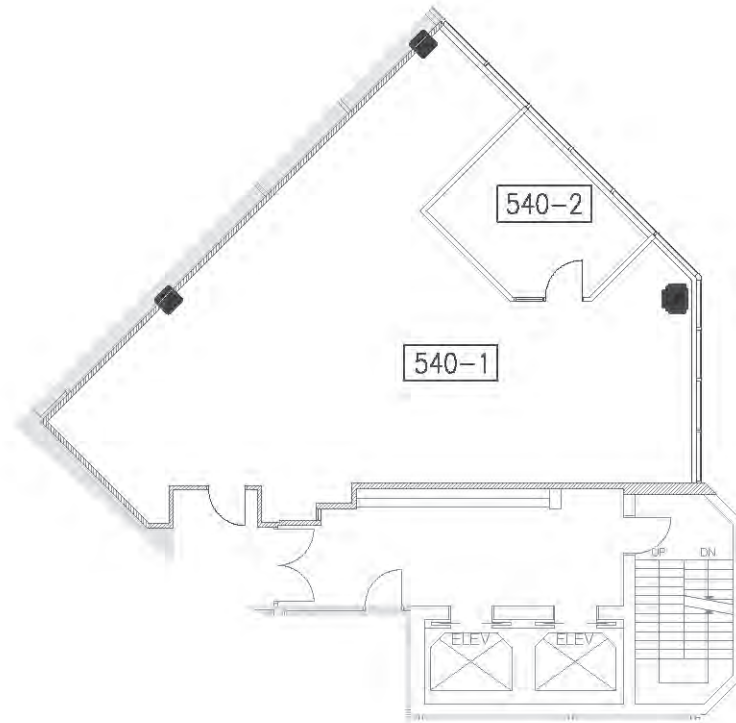


0' 4' 8' 16'

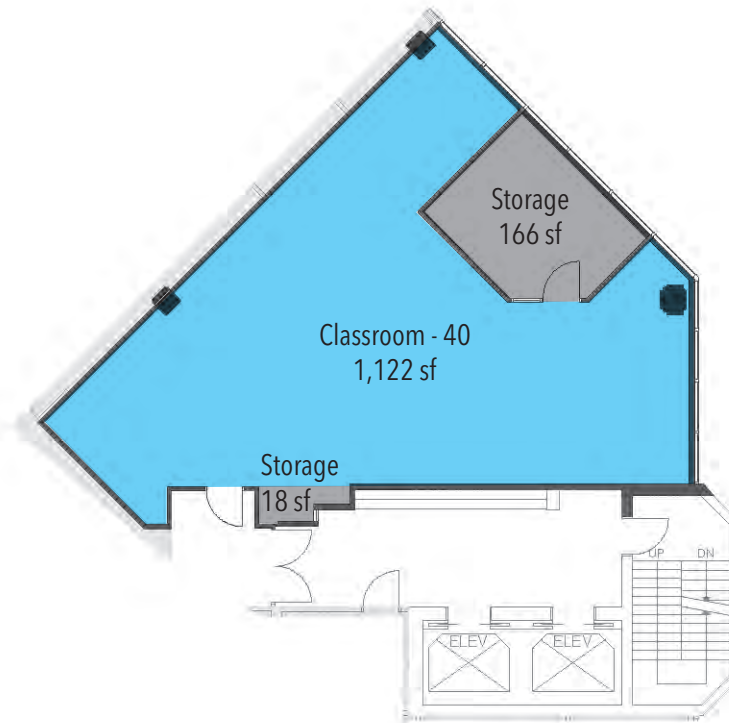


PROGRAM LEGEND

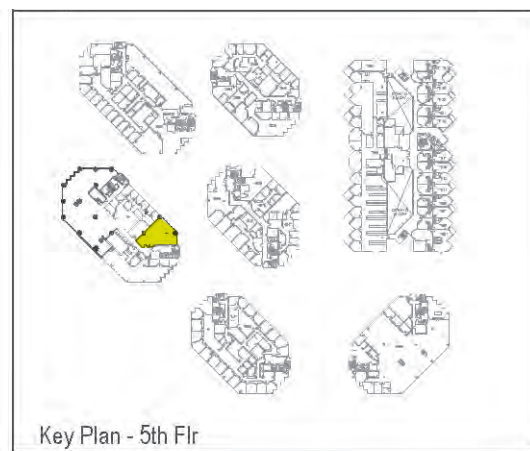
- Classrooms
- Misc. Program Space
- Private Offices
- Work Stations
- Shared Offices
- Support Space
- Library
- Corridors / Common Space
- Conference Room



Existing

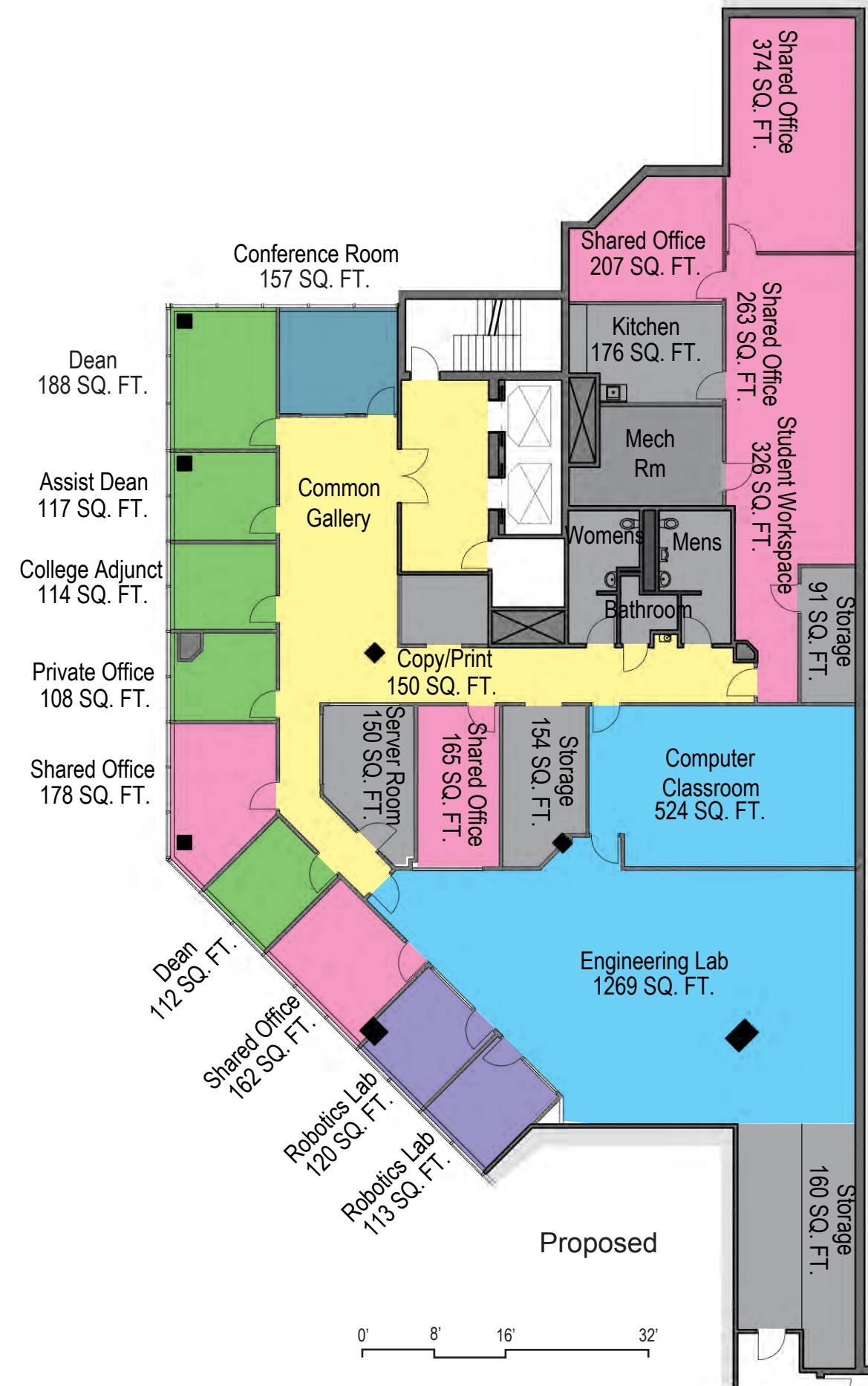
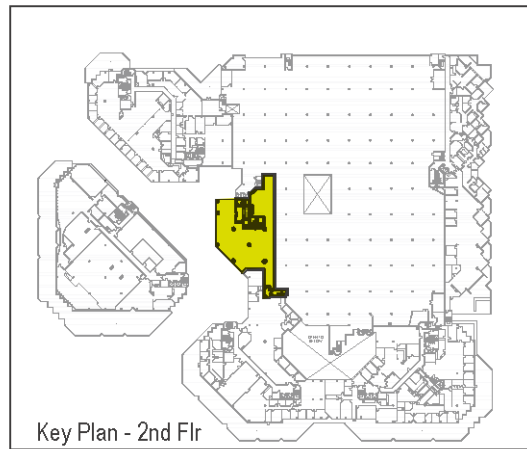
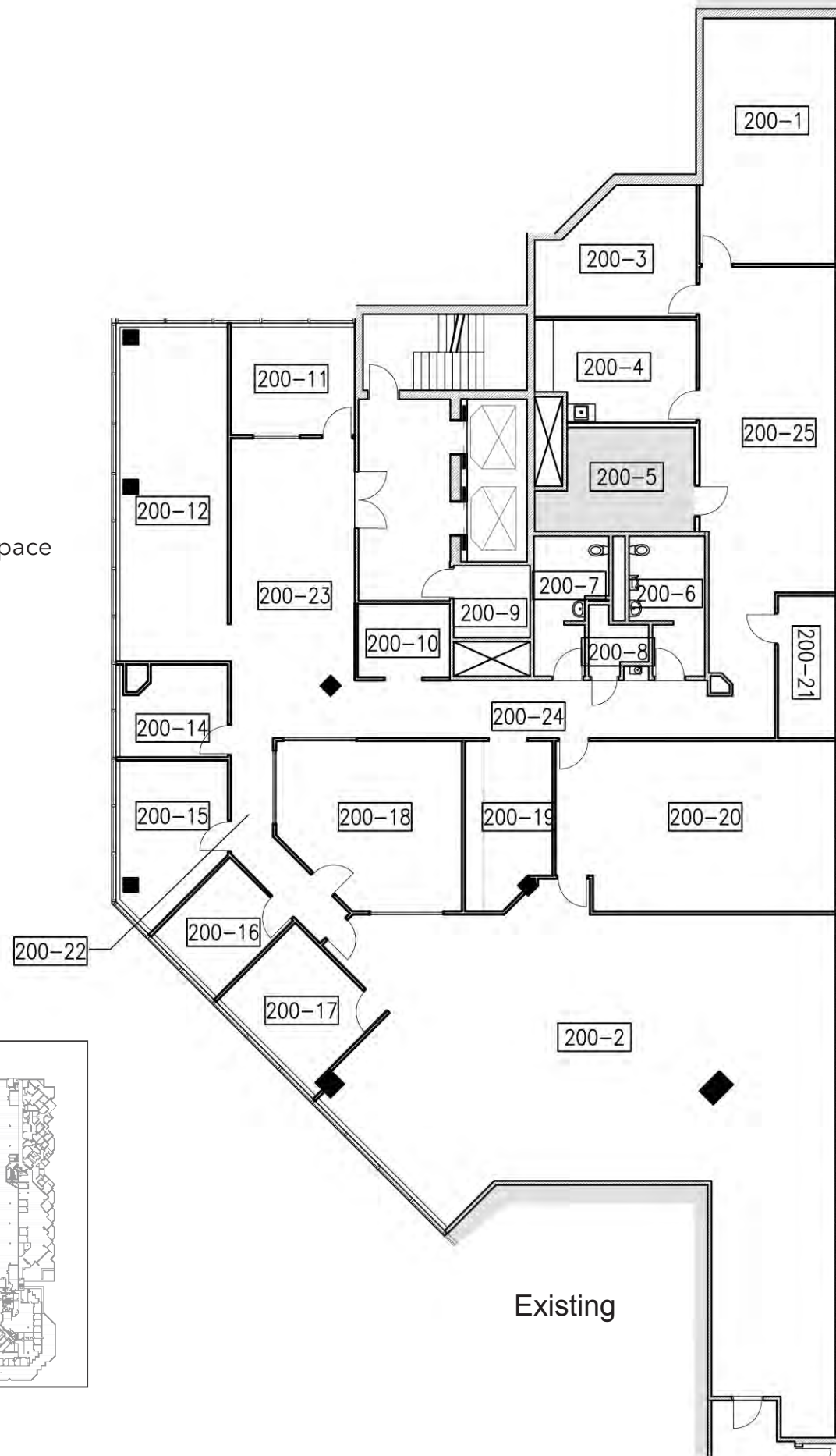


Proposed



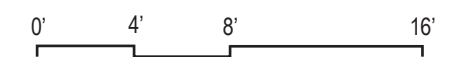
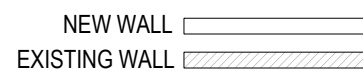
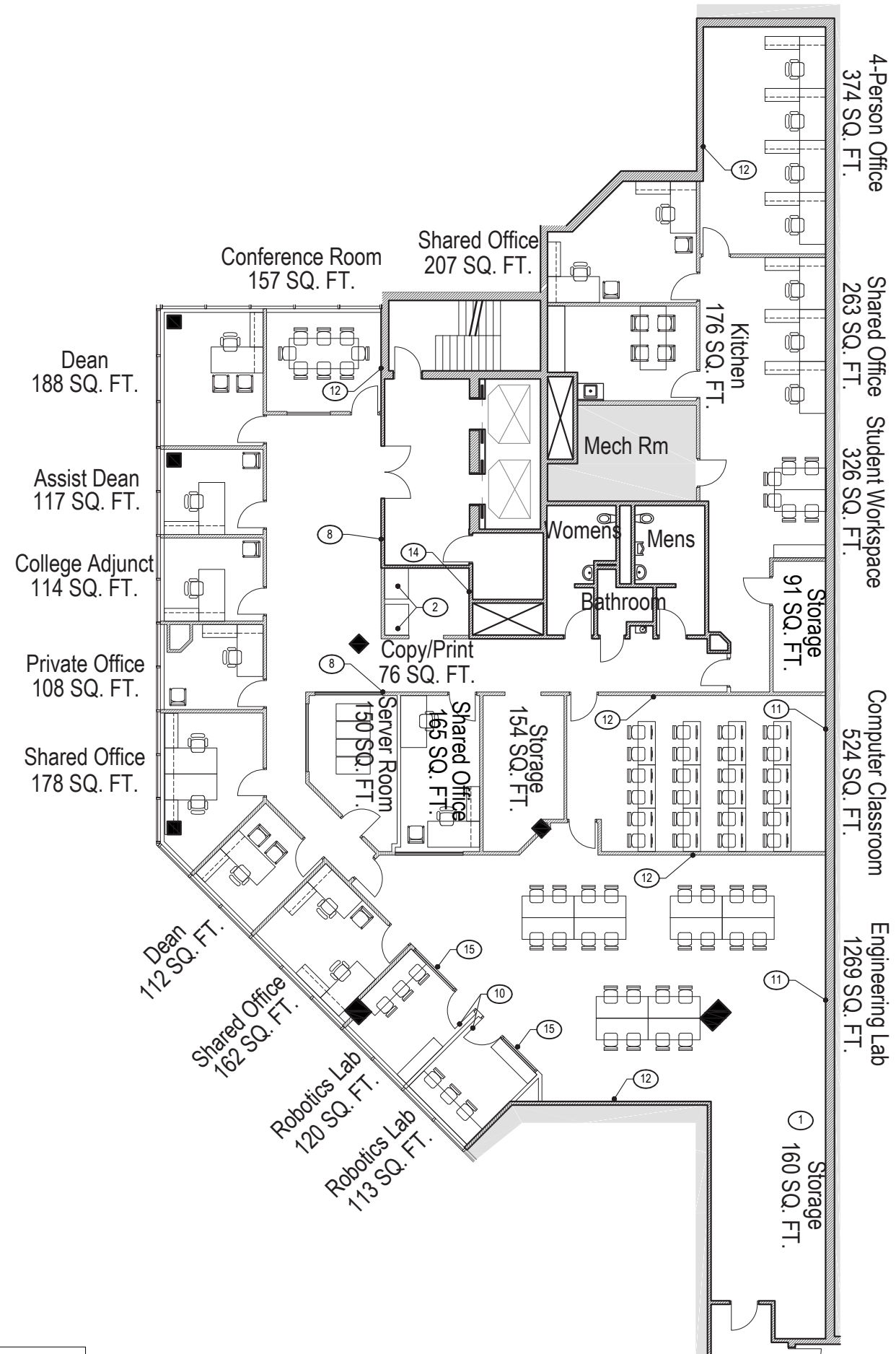
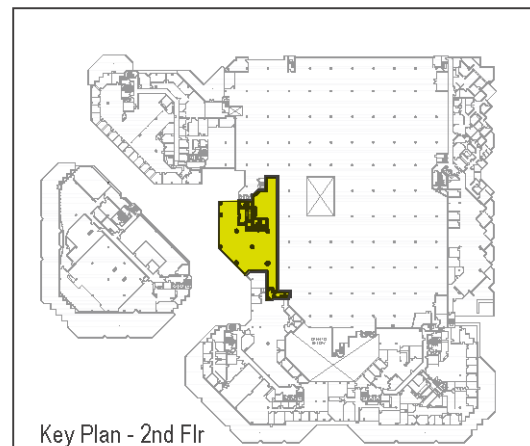
PROGRAM LEGEND

- Classrooms
- Misc. Program Space
- Private Offices
- Work Stations
- Shared Offices
- Support Space
- Library
- Corridors / Common Space
- Conference Room



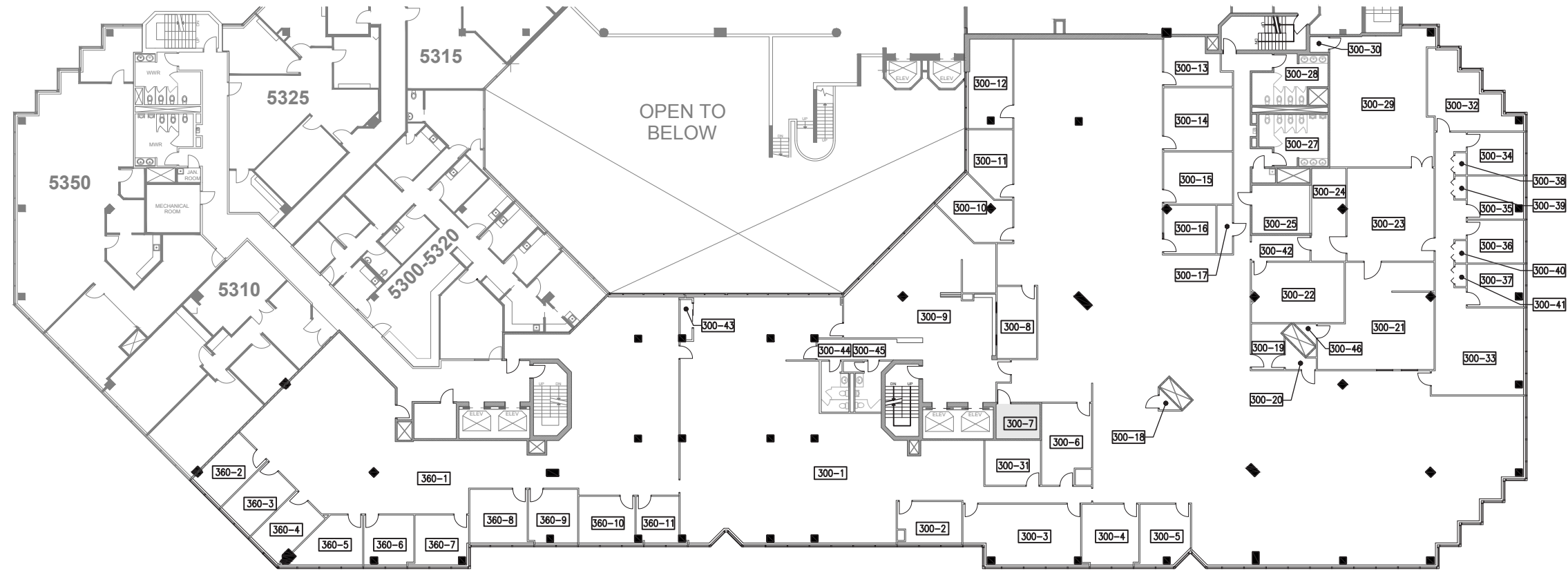
FURNITURE PLAN KEY NOTES:

Key	Note
1	Shelving
2	Multipurpose Printer
3	Reserved Books
4	Book Carts
5	Lockers
6	Large Format Printer
7	Faculty Mail Boxes
8	Art Display Area
9	New Plumbing Fixtures
10	Full Lite Glass Barn/Swinging Door
11	Instruction Wall
12	Walltalker Markerboard Wallcovering
13	Guest Seating
14	Existing Electrical Panels
15	New Interior Glass Enclosure

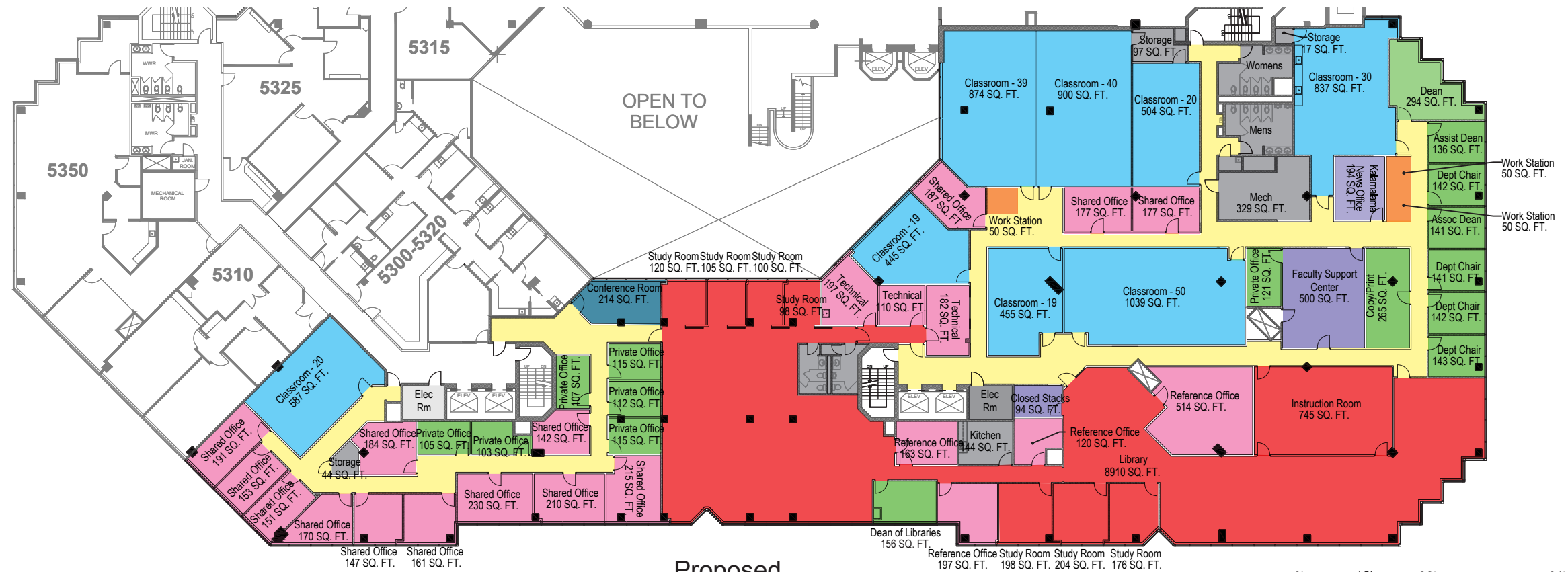


PROGRAM LEGEND

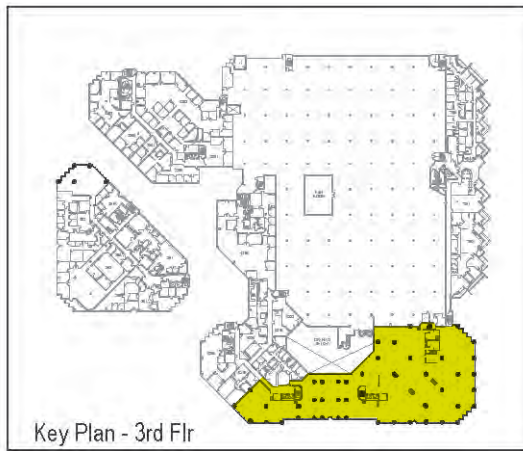
- Classrooms
- Misc. Program Space
- Private Offices
- Work Stations
- Shared Offices
- Support Space
- Library
- Corridors / Common Space
- Conference Room



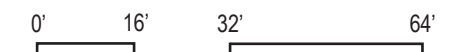
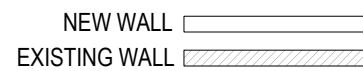
Existing



Proposed

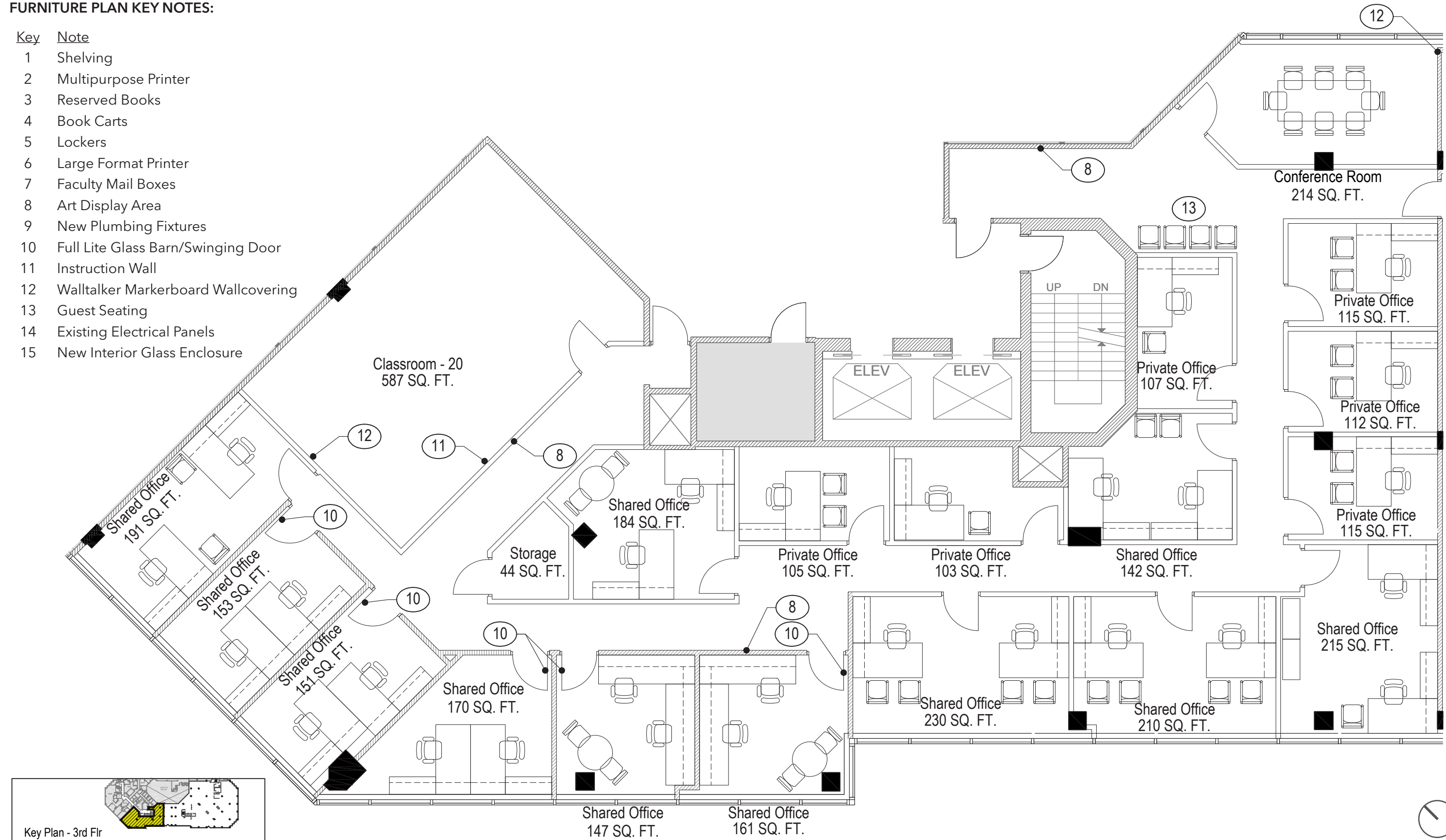


Key Plan - 3rd Flr



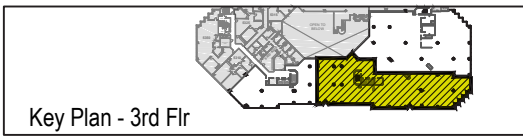
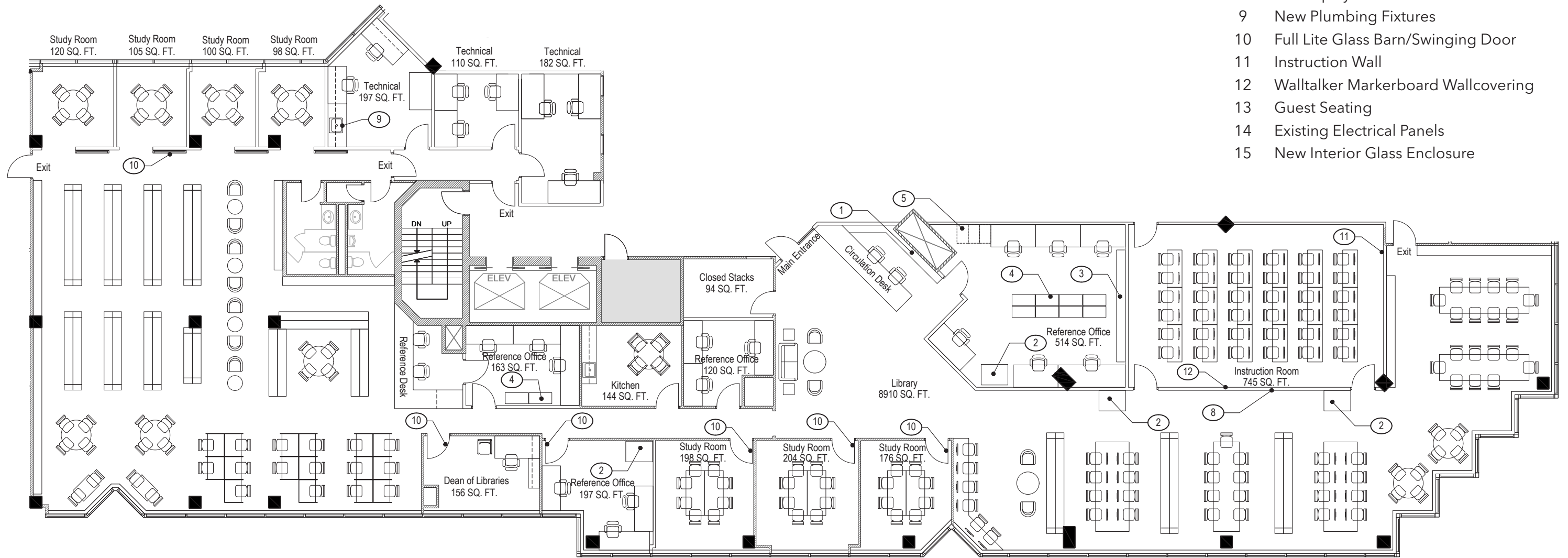
FURNITURE PLAN KEY NOTES:

- | Key | Note |
|-----|-------------------------------------|
| 1 | Shelving |
| 2 | Multipurpose Printer |
| 3 | Reserved Books |
| 4 | Book Carts |
| 5 | Lockers |
| 6 | Large Format Printer |
| 7 | Faculty Mail Boxes |
| 8 | Art Display Area |
| 9 | New Plumbing Fixtures |
| 10 | Full Lite Glass Barn/Swinging Door |
| 11 | Instruction Wall |
| 12 | Walltalker Markerboard Wallcovering |
| 13 | Guest Seating |
| 14 | Existing Electrical Panels |
| 15 | New Interior Glass Enclosure |



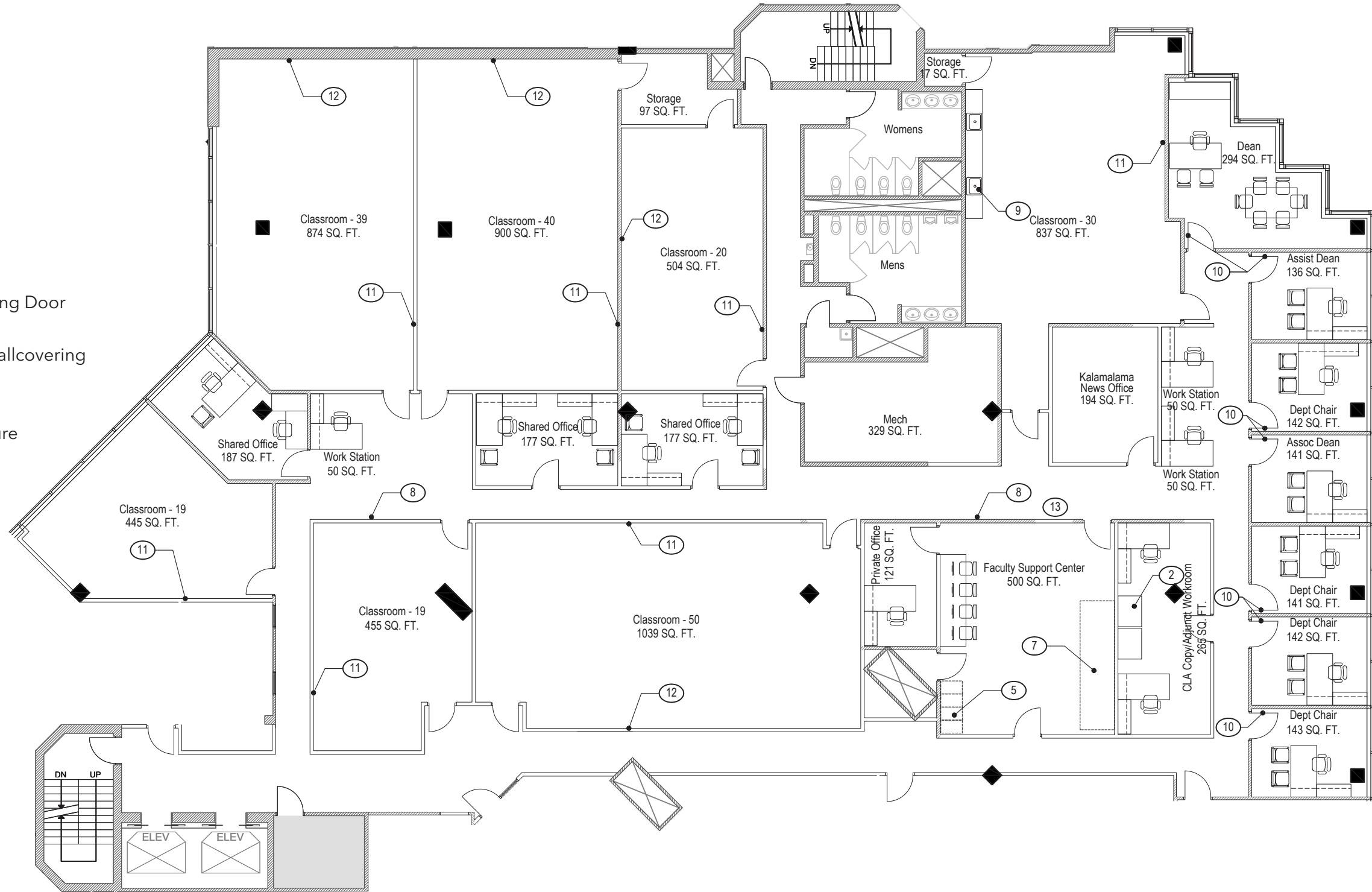
FURNITURE PLAN KEY NOTES:

Key	Note
1	Shelving
2	Multipurpose Printer
3	Reserved Books
4	Book Carts
5	Lockers
6	Large Format Printer
7	Faculty Mail Boxes
8	Art Display Area
9	New Plumbing Fixtures
10	Full Lite Glass Barn/Swinging Door
11	Instruction Wall
12	Walltalker Markerboard Wallcovering
13	Guest Seating
14	Existing Electrical Panels
15	New Interior Glass Enclosure



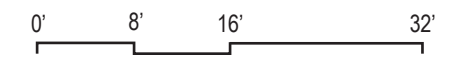
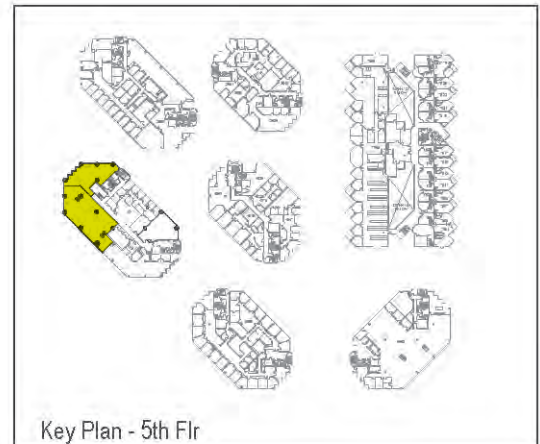
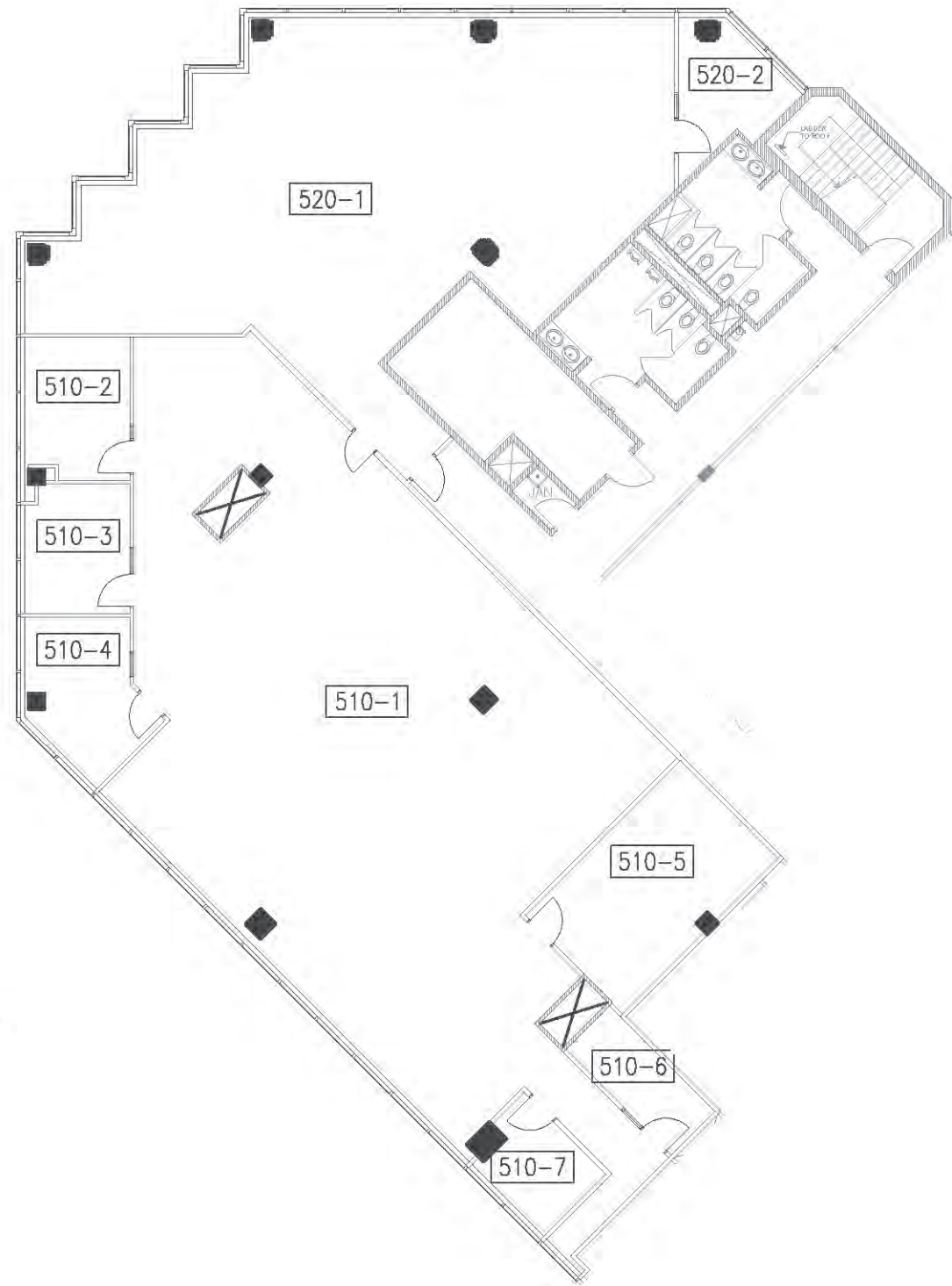
FURNITURE PLAN KEY NOTES:

- | Key | Note |
|-----|-------------------------------------|
| 1 | Shelving |
| 2 | Multipurpose Printer |
| 3 | Reserved Books |
| 4 | Book Carts |
| 5 | Lockers |
| 6 | Large Format Printer |
| 7 | Faculty Mail Boxes |
| 8 | Art Display Area |
| 9 | New Plumbing Fixtures |
| 10 | Full Lite Glass Barn/Swinging Door |
| 11 | Instruction Wall |
| 12 | Walltalker Markerboard Wallcovering |
| 13 | Guest Seating |
| 14 | Existing Electrical Panels |
| 15 | New Interior Glass Enclosure |



PROGRAM LEGEND

- Classrooms
- Misc. Program Space
- Private Offices
- Work Stations
- Shared Offices
- Support Space
- Library
- Corridors / Common Space
- Conference Room



HPU - COLLEGE OF LIBERAL ARTS

Space	Net Area (sf)	Capacity (person/sf)	Net Body/Space	Qty Needed	Net Area Total (sf)	Notes	Option 1 Count	Diff
SMALL classroom (1-19)	0 - 380	20	1 - 19	3	1,140	sized for 1 student per 25 sq ft	3	0
MID A classroom (20-29)	440 - 638	22	20 - 29	6	2,640 - 3,828		6	0
MID B classroom (30-39)	660 - 858	22	30 - 39	5	3,300 - 4,290	(2) art classrooms near plumbing	5	0
LARGE classroom (40-50)	880 - 1,100	22	40 - 50	3	2,640 - 3,300		3	0
Instruction Room	792	22	36	1	792	<i>Multipurpose use with library</i>	1	0
TOTAL CLASSROOMS				18	10,512 - 13,350		18	0
psych testing room	200 - 250	22		1	200 - 250		1	0
student newspaper office	400 - 500	22		1	400 - 500		1	0
TOTAL MISC CLASSROOMS				2	600 - 750		2	0
private office - Dean	300	300	1	1	300	sized for 1 private office	1	0
private office - Assoc Dean	200	200	1	1	200		1	0
private office - Assist Dean	100	100	1	1	100	(3) admin assist included in open office	1	0
private office - Dept Chairs	150	150	1	5	750		4	(1)
private office - faculty	100	100	1	5	500	<i>(5) Offices to move to MP: Theresa - Dir of PA, Alec - Dir of Choral, Barbara - Int Coord, Jean - Chair BA TESOL, Ienneth - Dir MA TESOL</i>	10	5
shared offices	300	150	2	15	4,500	1-5 faculties per office, 40 faculties total *Op 1 - 18 Op 2 - 3 shared offices . <i>Per Provost Suzanne, can not have shared more than 2pax.</i>	16	1
open office - workstation	50	50	1	3	150	sized for 1 workstation per 48 sq ft (6x8)	3	0
TOTAL OFFICES				31	6,500		36	5
Conference Room	214				214		1	
Faculty Support Center	498				498		1	
TOTAL SUPPORT SPACES					712		2	
Net Total				51	18,324 - 21,312		58	5

FOOTNOTES:

1. Program based on CLA Chart #3 of office dispersion and assignments.
2. 18 of the 20 total classrooms at WFP for CLA, dispersed based on size
3. Program legend green and red highlights. Green highlighted program where program needs were met. Reg highlighted program where program needs were not able to be met.
4. Average office square footage is based on 115-150sf per HPU standards
5. Department chair and Dean office square footages based on 200 sf per office per HPU standards
6. Layout of classrooms, offices, and ancillary spaces based on maintaining as many existing walls as possible.
7. Plumbing calculations not determined at this time
8. Assumed occupancy load and class of Group B

HPU - Library

Space	Net Area (sf)	Capacity (person/sf)	Net Body/Space	Qty Needed	Net Area Total (sf)	Notes	Count	Diff
Library	8,910	50		1	8,910		1	0
Study Room	98 - 204	15		6	588 - 1,224		7	1
Reference Office	120 - 514	100		4	480 - 256	(4) offices (15) Staff	4	0
Instruction Room	745	20		1	745		1	0
Technical	110 - 182	100		3	330 - 546	(3) shared offices for 5.5 staff	3	0
Closed Stacks	94			1	94		1	0
Reserved Books				1			1	0
Reference Desk				1			1	0
Circulation Desk				1			1	0
Kitchen	144			1	144		1	0
Dean of Libraries	156	100		1	156		1	0
Total				21	11,447 - 13,875		22	1

FOOTNOTES:

1. Program legend green and red highlights. Green highlighted program where program needs were met. Reg highlighted program where program needs were not able to be met.
2. Average office square footage is based on 115-150sf per HPU standards
3. Department chair and Dean office square footages based on 200 sf per office per HPU standards
4. Layout of classrooms, offices, and ancillary spaces based on maintaining as many existing walls as possible.
5. Plumbing calculations not determined at this time
6. Assumed occupancy load and class of Group B
7. Structural assessment of floor loads and weight limits not completed at this time

HPU - Engineering Department

Space	Net Area (sf)	Capacity (person/sf)	Net Body/Space	Qty Needed	Net Area Total (sf)	Notes	Count	Diff
Computer Classroom (25-39)	550 - 858	22	25 - 39	1	550 - 858		1	0
Engineering Lab	1,269	22	24	1	1,69		1	0
Student Workspace	326	22		1	326		1	0
Robotics Lab	113 - 120	22	8	2	226 - 240		2	0
TOTAL CLASSROOMS				5	2,371 - 2,693		5	0
private office - Dean	300	300	1	2	600		2	0
private office - Assist Dean	150	150	1	1	150		1	0
private office - College Adjunct	150	150	1	1	150		1	0
private office	100	100	1	1	100		1	0
shared office	300	150	2	4	1,200 (2-3) People per office		6	2
TOTAL OFFICES				10	2,650		11	1
Copy/Print	157		1	1	157		1	0
Kitchen	176		1	1	176		1	0
Server Room	150		1	1	150		1	0
Conference Room	120	15	8	1	120		1	0
TOTAL SUPPORT SPACES				4	603		4	0
Total				20	5,624 - 5,946		21	1

FOOTNOTES:

1. Program legend green and red highlights. Green highlighted program where program needs were met. Reg highlighted program where program needs were not able to be met.
2. Average office square footage is based on 115-150sf per HPU standards
3. Department chair and Dean office square footages based on 200 sf per office per HPU standards
4. Layout of classrooms, offices, and ancillary spaces based on maintaining as many existing walls as possible.
5. Plumbing calculations not determined at this time
6. Assumed occupancy load and class of Group B
7. Structural assessment of floor loads and weight limits not completed at this time

PROGRAM	COUNT	4-200	1-304	1-510	1-520	1-540	5-360	6-300	TOTAL
Classroom - Small - 19	3	0	0	1	0	0	0	2	3
Classroom - Mid-A - 20	4	0	0	1	1	0	1	1	4
Classroom - Mid-A - 29	2	0	0	1	1	0	0	0	2
Total - Mid-A									6
Classroom - Mid-B - 30	3	0	1	1	0	0	0	1	3
Instructional Room	1	0	0	0	0	0	0	1	1
Classroom - Mid-B - 39	2	0	0	1	0	0	0	1	2
Total - Mid-B									6
Classroom - Large - 40	2	0	0	0	0	1	0	1	2
Classroom - Large - 50	1	0	0	0	0	0	0	1	1
Total - Large									3
Office - Dean	1	0	0	0	0	0	0	1	1
Office - Assoc Dean	1	0	0	0	0	0	0	1	1
Office - Assist Dean	1	0	0	0	0	0	0	1	1
Office - Dept Chair	5	0	0	0	0	0	1	4	5
Office - Private	15	0	3	0	0	0	11	1	15
Office - Shared	10	0	2	0	0	0	5	3	10
Office - Work Station	3	0	0	0	0	0	0	3	3
Support - Conference Room	1	0	0	0	0	0	1	0	1
Support - Storage	9	3	0	0	0	2	2	2	9
Support - Kitchen	1	0	0	0	0	0	0	1	1
Support - Faculty Support Center	1	0	0	0	0	0	0	1	1
Library	1	0	0	0	0	0	0	1	1
Library - Study Room	7	0	0	0	0	0	0	7	7
Library - Reference Office	4	0	0	0	0	0	0	4	4
Library - Technical	3	0	0	0	0	0	0	3	3
Library - Closed Stacks	1	0	0	0	0	0	0	1	1
Library - Reserved Books	1	0	0	0	0	0	0	1	1
Library - Reference Desk	1	0	0	0	0	0	0	1	1
Library - Circulation Desk	1	0	0	0	0	0	0	1	1
Library - Dean of Libraries	1	0	0	0	0	0	0	1	1

PROGRAM	COUNT	4-200	1-304	1-510	1-520	1-540	5-360	6-300	TOTAL
Misc Classroom - Psych Lab	1	0	1	0	0	0	0	0	1
Misc Classroom - News Office	1	0	0	0	0	0	0	1	1
Engin - Computer Classroom	1	1	0	0	0	0	0	0	1
Engin - Engineering Lab	1	1	0	0	0	0	0	0	1
Engin - Student Workspace	1	1	0	0	0	0	0	0	1
Engin - Robotics Lab	2	2	0	0	0	0	0	0	2
Engin - Dean	2	2	0	0	0	0	0	0	2
Engin - Assist Dean	1	1	0	0	0	0	0	0	1
Engin - College Adjunct	1	1	0	0	0	0	0	0	1
Engin - Private Office	1	1	0	0	0	0	0	0	1
Engin - Shared Office	6	6	0	0	0	0	0	0	6
Engin - Copy/Print	1	1	0	0	0	0	0	0	1
Engin - Kitchen	1	1	0	0	0	0	0	0	1
Engin - Server Room	1	1	0	0	0	0	0	0	1
Engin - Conference Room	1	1	0	0	0	0	0	0	1
TOTAL - CLASSROOMS		2	1	5	2	1	1	8	20
TOTAL - PRIVATE OFFICES		5	3	0	0	0	12	9	29
TOTAL - SHARED OFFICES		6	2	0	0	0	5	13	26
TOTAL - MISC SPACE/SUPPORT		10	1	0	0	2	3	17	33
TOTAL NUMBER OF SPACES		23	7	5	2	3	21	47	108

